

RAPIDFLEX[®] HIGH SPEED DOORS



PRODUCT LINE

INTERIOR FABRIC DOORS

EXTERIOR FABRIC & RUBBER DOORS

MODELS

990/991/992

993/994/995



INDUSTRY LEADING
COMMERCIAL & INDUSTRIAL SOLUTIONS



General features and benefits

Springless, high cycle design

- Minimizes down-time, ideal for high cycle applications

Interior and exterior models

- Interior fabric models: 990, 991 and 992
- Exterior fabric & rubber models: 993, 994 and 995

Fast-acting

- Fully opens in 4 seconds or less*

Break away bottom

- Designed to break away from the side guides to minimize damage
- Simple reset and self repair after a break away event
- Impact detection

Airtight guides (Model 991)

- Tight sealing guides resist air pressure
- Help control environments
- Minimize debris
- Powder coated

*Depending on opening height and door models

Cover image: Model 994, Gray

Image above: Model 995, Black

Direct gear drive system

- Eliminates the wear and tear associated with conventional chain and sprocket systems
- Advanced gearbox design features door stop safety device

Robust safety features

- Dual infrared sensors
- Wireless bottom reversing edge
- Flexible bottom edge (Model 990)
- Built-in door stop device

Independently tested

- Air infiltration
- Wind load / Operational wind load

Hood standard

Padlockable at controller fused disconnect

Plug and play wiring

5-year limited warranty – Models 991, 992, 993, 994, 995

5-year limited warranty on gear box and motor;

1-year limited warranty on all other components – Model 990

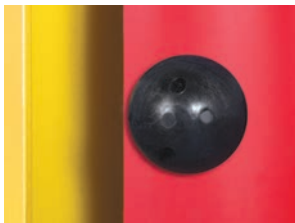


High performance doors that are as fast, reliable and versatile as your business

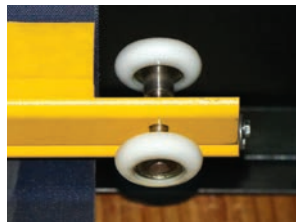
Multiple high speed doors for the utmost in efficiency, reliability and return on investment.

The RapidFlex® series of high performance doors are engineered to allow maximum productivity with fast-acting curtains, high-cycle performance and resistance to damage from accidental collisions. With robust safety features and a pressure resistant design, these high speed doors will keep your facility running securely, efficiently and environmentally controlled.

Special features



Patent-pending curtain lock
(Models 990 and 991 only)
Our patent-pending curtain lock design enables doors to be repaired quickly and in the field, unlike zippered doors.



Articulating roller wind strut
(Model 994 only)
Our patent-pending roller wind strut enables doors to have operational wind load rating.



Reversing edge
All Overhead Door™ high speed doors feature a wireless reversing edge designed to retract with minimum contact load.



Obstruction detection
Each door features two in-plane infrared sensors, placed at the bottom and partway up the door, minimizing contact with objects in the doorway.



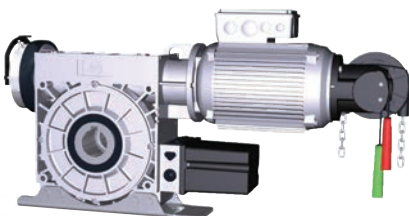
Flexible bottom bar
(Model 990 only) with detachable bottom seal for easy replacement and troubleshooting.



3-phase NEMA 4X control panel
On-board self diagnostic capabilities. Built-in service reminder. Fifteen programmable inputs and five programmable outputs. Padlockable fused disconnect.



1-phase NEMA 4X control panel
On-board self diagnostic capabilities. Designed to work with 120V AC and 230V AC 1-Phase power source. Eight programmable inputs and two programmable outputs.



Direct drive motor
Advanced gearbox features door stop safety device and gear teeth designed to spread the drive and shock loads over a larger tooth contact area for reduced maintenance costs and increased durability.

Signaling device options
Red/green LED warning light, horn/strobe combination, rotating warning light.

Actuation options
Push button, key switch, pull switch, loop detector, motion detector, treadle switch, radio control. Wireless options: pull switch, 1 or 3-button push button, palm button.

RAPIDFLEX® INTERIOR DOORS MODELS 990/991/992

Ideal for separating controlled environment spaces such as food and beverage facilities, high traffic zones, storage rooms and manufacturing areas to prevent cross-contamination.

- Dual recessed infrared sensors
- Patent-pending curtain lock allows for quiet and smooth operation on Models 990 and 991
- Flexible bottom bar with detachable seal for easy replacement and troubleshooting on Model 990



Model 991, Red, windows



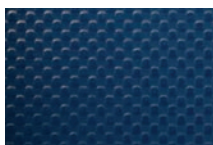
General specifications for RapidFlex® Interior Doors

Model	RapidFlex® 990	RapidFlex® 991	RapidFlex® 992
Maximum width	12'	14'	16'
Maximum height	12'	14'	15'
Opening speed	Up to 70"/sec	Up to 70"/sec	Up to 65"/sec
Closing speed	Up to 40"/sec	Up to 40"/sec	Up to 40"/sec
Certified air tightness*	Not available	< 0.236 cfm/sq ft	Not available
Curtain lock	Yes	Yes	Not available
Break away self reset	Yes	Yes	Yes
Pressure/wind resistance**	Up to ±3.0 PSF or 58 MPH	Up to ±7.5 PSF or 90 MPH	Up to ±4.0 PSF or 76 MPH
Wind strut	Not available	Not available	1" strut standard
Operational Pressure ***	Up to ±1.0 PSF or 33 MPH	Up to ±2.5 PSF or 53 MPH	Up to ±2.5 PSF or 53 MPH
Door panel	2 layers of lightweight PVC-coated polyester; 1 layer of polyester weave	2 layers of PVC-coated polyester; 1 layer of polyester weave	2 layers of PVC-coated polyester; 1 layer of polyester weave
Vision	20" high windows spaced evenly across width of door	20" high windows spaced evenly across width of door	20" high windows spaced evenly across width of door
Operation	Direct drive motor and gearbox system with a door stop device	Direct drive motor and gearbox system with a door stop device	Direct drive motor and gearbox system with a door stop device
Control	Variable frequency drive NEMA 4X cULus listed Onboard self diagnostic and service reminder Built-in padlockable field disconnect	Variable frequency drive NEMA 4X cULus listed Onboard self diagnostic and service reminder Built-in padlockable field disconnect	Variable frequency drive NEMA 4X cULus listed Onboard self diagnostic and service reminder Built-in padlockable field disconnect
Obstruction detection	Infrared sensors mounted in-plane to the door curtain at 18" and 50" - 54" from floor	Infrared sensors mounted in-plane to the door curtain at 18" and 50" - 54" from floor	Infrared sensors mounted in-plane to the door curtain at 18" and 50" - 54" from floor
Reversing safety edge	Wireless reversing edge; Flexible bottom bar with detachable bottom seal	Wireless reversing edge	Wireless reversing edge
Electrical availability	120V AC 1PH; 230V AC 1PH; 230V AC 3PH; 460V AC 3PH; 575V AC 3PH	120V AC 1PH; 230V AC 1PH; 230V AC 3PH; 460V AC 3PH; 575V AC 3PH	120V AC 1PH; 230V AC 1PH; 230V AC 3PH; 460V AC 3PH; 575V AC 3PH
Hinged guides	Yes	Yes	Yes
Warranty	5-year limited on drive motor and gearbox; 1-year limited on all other components	5-year limited	5-year limited

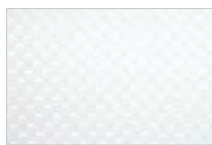
Color options for Models 990/991/992



Red



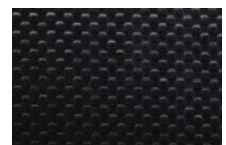
Blue



White (Model 990 only)



Gray



Black (Models 991 and 992 only)

Standard color for guides, brackets, struts and bottom bar is yellow. Approximately 200 optional RAL powder coat colors are available. Actual colors may vary from brochure due to fluctuation in the printing process. Always request a color sample from your Overhead Door™ Distributor for accurate color matching.

* Air tightness is independently tested to ASTM E283 test standard.

** Pressure/wind resistance value is the ultimate pressure tested at door width of 12' for 990, 10' for 991 and 16' for 992. The mph is determined in accordance to ASCE 7-10 EXP B.

*** Operational pressure value is the pressure tested up to 20,000 cycles at door width of 12' for 990 and 100,000 cycles at door width of 10' for 991 and 16' for 992.

RAPIDFLEX® EXTERIOR DOORS MODELS 993/994/995

Well-suited for applications where forklifts and commercial vehicles can quickly enter from the outside while resisting strong wind and the elements. Ideal for manufacturing facilities or extreme environments.

- Staged head plate design for easy installation
- Heavy duty strut with roller wind lock on Models 993 and 994
- Powder coated high visibility guides

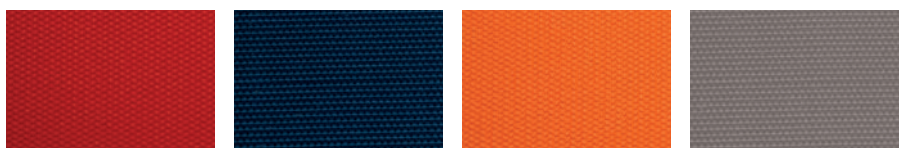




General specifications for RapidFlex® Exterior Doors

Model	RapidFlex® 993 (Fabric)	RapidFlex® 994 (Fabric)	RapidFlex® 995 (Rubber)
Maximum width	16'	24'	30'
Maximum height	15'	20'	30'
Opening speed	Up to 65"/sec	Up to 55"/sec	Up to 50"/sec
Closing speed	Up to 40"/sec	Up to 40"/sec	Up to 40"/sec
Certified air tightness*	Not available	Not available	Not available
Curtain lock	Not available	Not available	Yes
Break away self reset	Yes	Yes	Yes
Pressure/wind resistance**	Up to ±4.0 PSF or 76 MPH	Up to ±22.0 PSF or 158 MPH	Up to ±27.0 PSF or 180 MPH
Wind strut	1" strut standard	4" articulating roller wind strut	Not available
Operational Pressure ***	Up to ±2.5 PSF or 53 MPH	Up to ±5.0 PSF or 75 MPH	Up to ±5.0 PSF or 75 MPH
Door panel	3 layers of PVC-coated polyester; 2 layers of polyester weave	3 layers of PVC-coated polyester; 2 layers of polyester weave	5 layers of NBR rubber; 4 layers of polyester weave
Vision	20" high windows spaced evenly across width of door	20" high windows spaced evenly across width of door	10" x 20" windows (maximum quantity depending on door size)
Operation	Direct drive motor and gearbox system with a door stop device	Direct drive motor and gearbox system with a door stop device	Direct drive motor and gearbox system with a door stop device
Control	Variable frequency drive NEMA 4X cULus listed Onboard self diagnostic and service reminder Built-in padlockable field disconnect	Variable frequency drive NEMA 4X cULus listed Onboard self diagnostic and service reminder Built-in padlockable field disconnect	Variable frequency drive NEMA 4X cULus listed Onboard self diagnostic and service reminder Built-in padlockable field disconnect
Obstruction detection	Infrared sensors mounted in-plane to the door curtain at 18" and 50"- 54" from floor	Infrared sensors mounted in-plane to the door curtain at 18" and 50"- 54" from floor	Infrared sensors mounted in-plane to the door curtain at 8" and 50"- 54" from floor
Reversing safety edge	Wireless reversing edge	Wireless reversing edge	Wireless reversing edge
Electrical availability	120V AC 1PH; 230V AC 1PH; 230V AC 3PH; 460V AC 3PH; 575V AC 3PH	230V AC 3PH; 460V AC 3PH; 575V AC 3PH	230V AC 3PH; 460V AC 3PH; 575V AC 3PH
Hinged guides	Yes	Yes	Not available
Warranty	5-Year Limited	5-Year Limited	5-Year Limited

Color options for Models 993/994



Red

Blue

Orange

Gray

Color for Model 995



Black

Standard color for guides, brackets, struts and bottom bar is yellow. Approximately 200 optional RAL powder coat colors are available. Actual colors may vary from brochure due to fluctuation in the printing process. Always request a color sample from your Overhead Door™ Distributor for accurate color matching.

** Pressure/wind resistance value is the ultimate pressure tested at door width of 16 ft 993, 20 ft for 994, and 20 ft for 995. The mph is determined in accordance to ASCE 7-10 EXP B. *** Operational pressure value is the pressure tested up to 100,000 cycles at door width of 16 ft for 993, 24 ft for 994, and 20 ft for 995.



Model 992, Red



Tools to help you get the job done.

Architect's Corner

A resource for architects, containing comprehensive technical and resource materials to support your project, including drawings and specifications for commercial doors.

www.overheaddoor.com

The original, innovative choice for unequalled quality and service.

Overhead Door Corporation pioneered the upward-acting door industry, inventing the first upward-acting door in 1921 and the first electric door operator in 1926. Today, we continue to be the industry leader through the strength of our product innovation, superior craftsmanship and outstanding customer support, underscoring a legacy of quality, expertise and integrity. That's why design and construction professionals specify Overhead Door™ products more often than any other brand. Our family of over 400 Overhead Door™ Distributors across the U.S. and Canada not only share our name and logo, but also our commitment to excellence.



INDUSTRY LEADING
COMMERCIAL & INDUSTRIAL SOLUTIONS



2501 S. State Hwy. 121 Bus., Suite 200, Lewisville, TX 75067
1-800-929-DOOR • sales@overheaddoor.com
www.overheaddoor.com